



Nodal Polyclonal Antibody

Catalog No	YP-Ab-16079
Isotype	IgG
Reactivity	Human;Mouse;Rat
Applications	WB;IHC;IF;ELISA
Gene Name	NODAL
Protein Name	Nodal homolog
Immunogen	The antiserum was produced against synthesized peptide derived from the C-terminal region of human NODAL. AA range:294-343
Specificity	Nodal Polyclonal Antibody detects endogenous levels of Nodal protein.
Formulation	Liquid in PBS containing 50% glycerol, 0.5% BSA and 0.02% sodium azide.
Source	Polyclonal, Rabbit,IgG
Purification	The antibody was affinity-purified from rabbit antiserum by affinity-chromatography using epitope-specific immunogen.
Dilution	WB: 1/500 - 1/2000. IHC-p: 1:100-1:300. ELISA: 1/10000.. IF 1:50-200
Concentration	1 mg/ml
Purity	≥90%
Storage Stability	-20°C/1 year
Synonyms	NODAL; Nodal homolog
Observed Band	40kD
Cell Pathway	Secreted .
Tissue Specificity	Brain cortex,Fetal brain,
Function	disease:Defects in NODAL may be a cause of situs ambiguus [MIM:601265].,function:Essential for mesoderm formation and axial patterning during embryonic development.,similarity:Belongs to the TGF-beta family.,subunit:Homodimer; disulfide-linked.,
Background	This gene encodes a secreted ligand of the TGF-beta (transforming growth factor-beta) superfamily of proteins. Ligands of this family bind various TGF-beta receptors leading to recruitment and activation of SMAD family transcription factors that regulate gene expression. The encoded preproprotein is proteolytically processed to generate the mature protein, which regulates early embryonic development. This protein is required for maintenance of human embryonic stem cell pluripotency and may play a role in human placental development. Mutations in this gene are associated with heterotaxy, a condition characterized by random orientation of visceral organs with respect to the left-right axis. [provided by RefSeq, Aug 2016],



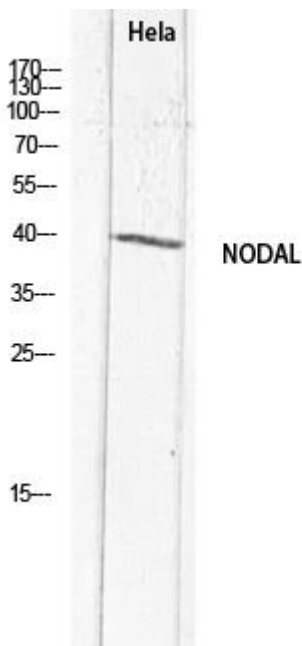
matters needing attention

Avoid repeated freezing and thawing!

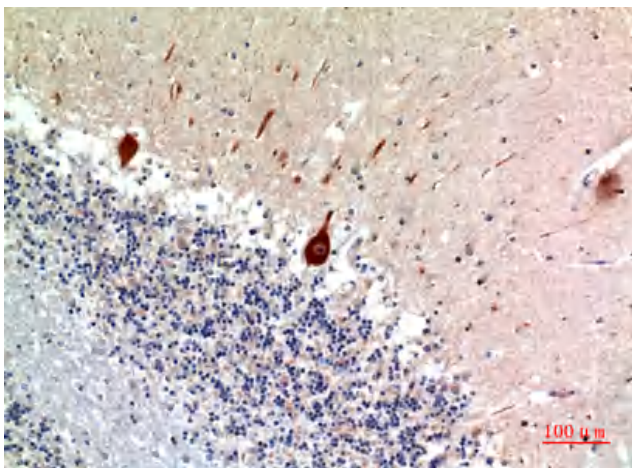
Usage suggestions

This product can be used in immunological reaction related experiments. For more information, please consult technical personnel.

Products Images



Western blot analysis of HeLa lysis using NODAL antibody. Secondary antibody(catalog#:RS0002) was diluted at 1:20000



Immunohistochemical analysis of paraffin-embedded human-brain, antibody was diluted at 1:100